



Our vision  
**transforms your ideas  
into solid projects**

  
**ESHET**  
ENGINEERING GROUP LTD.

## Our vision transforms your ideas into solid projects

The Eshet Group specializes in civil engineering for government agencies, enterprises and entrepreneurs. As a leader since 1987, Eshet has a broad range of experience in the design and implementation of many engineering projects in the areas of construction, roads and transportation.

Eshet's professional handiwork can be found all over the globe in a variety of buildings, factories, plants and critical infrastructure including:

1. Power and chemical plants
2. Metallurgical, pharmaceutical, & industrial factories
3. Airports, hotels, hospitals, stadiums & large shopping centers
4. Refineries, ports and logistics centers
5. Roads, bridges and car parks
6. Residential neighborhoods & multi-story apartment buildings

Eshet's headquarters are located in Beer-Sheva, Israel, with branches in Tel-Aviv, Jerusalem, Haifa, Rehovot and Eilat. The group has international branches in Africa (Addis Ababa, Nairobi and Lagos) and in Russia (Moscow and St. Petersburg).



## Our people are our best assets

The Eshet Group is proud of its more than 250 employees who are the driving force behind the company's success. The company invests in the personal and professional advancement of its employees, including training in the latest technologies, exposure to cutting-edge industry studies and attendance at professional conferences. The company's divisions are led by senior managers with extensive knowledge and many years of experience. These high-level human resources, along with their skilled teams, are the foundation for Eshet's ability to repeatedly handle complex projects with a high level of success.



## Turnkey Projects

### **You can count on us, from preliminary stages until project completion**

Eshet undertakes projects from the early stages of design, planning and development until the final completion phase. The company manages the venture as a complete turnkey solution that encompasses execution of the project's design, supply and construction.

#### Major components of Eshet's end-to-end turnkey solutions include:

1. Feasibility studies, incorporating established methods, procedures and documentation
2. Site development
3. Management of the bidding process and negotiation of contracts
4. Materials management, including field procurement, receipt of materials, inspection, warehousing and issuing materials to contractors
5. Construction and field administration
6. Commissioning and maintenance of operations
7. Oversight of safety regulations



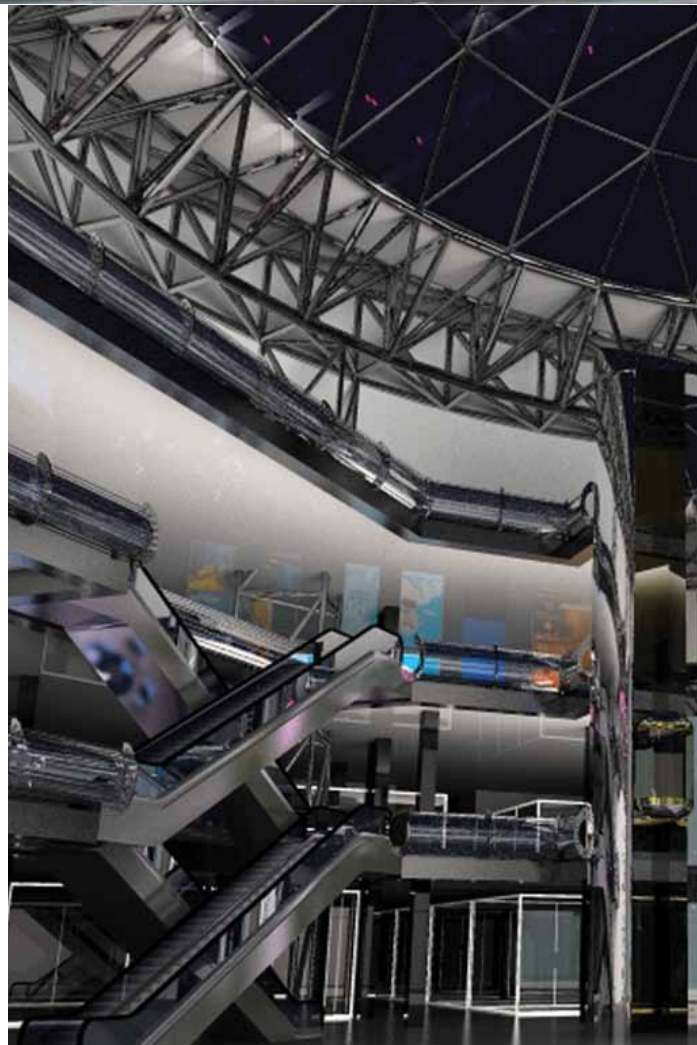


## Structure Engineering Division

### **Our comprehensive planning saves you time, money and hassle**

Eshet's structure design division is comprised of engineers who are responsible for the design of concrete and steel structures of all sizes and purposes, including multi-story buildings, bridges, underground structures, explosion-proof buildings and all types of industrial steel structures.

Eshet's engineering team takes full responsibility for the design of all elements of the structure, ensuring that the most complex projects are planned properly from the start. Eshet is renowned for its creative solutions and zero-defect plans, resulting in first-time approvals that save clients significant time and expense over the course of a project.





## Roads and Traffic Division

### Take the high road with our comprehensive planning services

Eshet has extensive experience in designing roads and tracks, from the physical planning of the roads, through the specification and design for drainage. The company also specializes in transportation and traffic plans, infrastructures, and urban development.

Eshet's engineers use patented software and other technologies to find creative solutions that help customers realize cost savings, shorten construction schedules and meet all project deadlines. Eshet's comprehensive QA process ensures that all specifications meet the highest global standards - with zero defects - leading to approvals upon first plan submission.

Eshet's roads and traffic engineering services include:

1. Traffic planning
2. Road planning
3. Earth works
4. Drainage





## We are committed to the world we live in

Eshet is committed to sustaining the environment through the continuous improvement of its processes and services. The group achieves this by complying with and striving to exceed all applicable laws, regulations, and company standards; promoting measures to reduce the amount and impact of air pollution, water and energy usage, wastewater discharge and waste disposal; implementing the reuse or recycling of waste materials; and encouraging the use of environmentally friendly technologies and materials in their research, development, and engineering processes.



## Global reach. Global quality.

Eshet has decades of experience designing and implementing civil engineering projects around the globe. The company's computer systems, software and printers are among the most advanced in the world, and enable Eshet to provide an unmatched level of accuracy, unique graphical presentation and design optimization.

Eshet's in-house consultants, architects, designers and environment security advisers are all certified under ISO 9001-2008 international standards.



[www.eshet-eng.com](http://www.eshet-eng.com)

▲ Structure Engineering ▲ Roads & Traffic ▲ Engineering Services ▼ International Projects ▼ Hightech & Biotech Services ▲ On-Site Services

**Headquarters:** Tel: +972-73-2370-370 Fax: +972-73-2370-360 72 Hapalmach St. P.O.Box 5234 Beer Sheva 8415102, Israel